



## ASTM 60-40-18 Ductile Iron Resin Sand Casting

Our Product Introduction

for more products please visit us on [greycastironcasting.com](http://greycastironcasting.com)

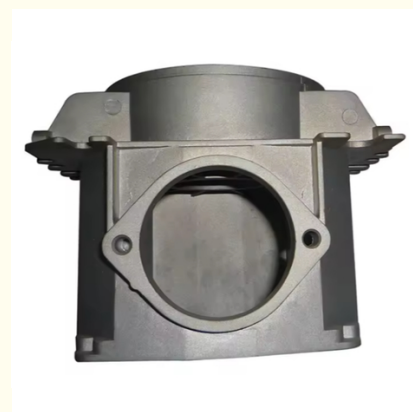
### Basic Information

- Place of Origin: China
- Brand Name: NC5721
- Certification: ISO9001,CE,SGS
- Model Number: 5721
- Minimum Order Quantity: 100 pcs
- Price: Can talk
- Packaging Details: Wooden Case
- Delivery Time: 30 days
- Payment Terms: T/T, L/C
- Supply Ability: 80,000 pcs monthly



### Product Specification

- Material: Ductile Iron
- Process: Resin Sand Casting
- Application: Machinery Part
- Tolerance: 0.1-0.5
- Size: Customized
- Inspection: 100%



### More Images



## Product Description

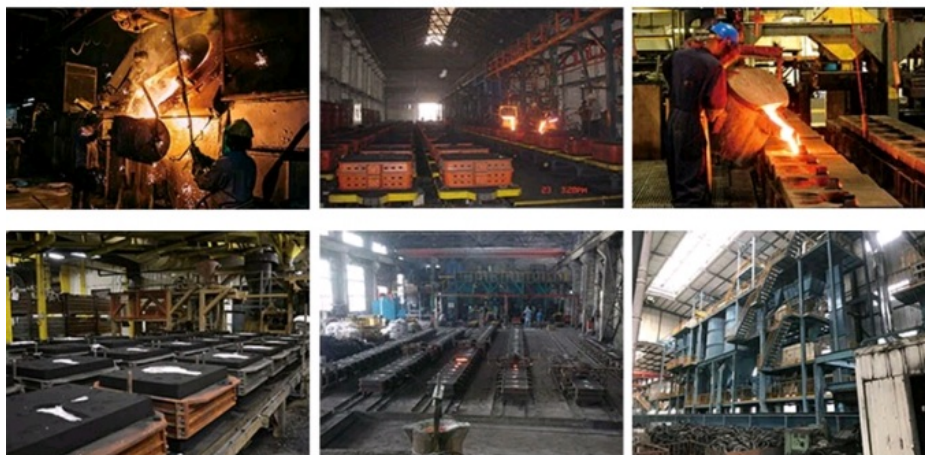
### ASTM 60-40-18 Ductile Iron Resin Sand Casting

#### Product Details

Material	Gray Iron, Ductile Iron
Film Standard	Powder coating: 60-120 $\mu$ , Electrophoresis film: 12-25 $\mu$ .
Part Weight	from 3 g --- 20kgs
Surface Treatment	Mill-Finished, Powder Coating, Polishing, Brushing, etc.
Drawing format	IGES, STEP, AutoCAD, Solidworks, STL, PTC Creo, DWG, PDF, etc..
Deep Processing	CNC / Cutting / Punching / Checking / Tapping / Drilling / Milling
Application	industrial, consumer, food processing, aviation, seals/gaskets, lighting, packaging, filter, healthcare, telecommunications, mechanical, water treatment, appliance, recreation, lawn and garden, educational, oil and gas, government, construction, plumbing, surveillance, pumps, marine, motors, gears, RFID tags, electronics, and fasteners.

#### Production Process

### WorkShop



#### About Us

Sunrise Foundry is a professional Metal Foundry, located in Ningbo. We have been producing Gray Iron, Ductile Iron Castings and any other precision castings for more than 25 years.

We are dedicated to meet different requirements of various customers across the world, products are mainly involved Agricultural and Construction Machinery, Hydraulic, Mining industry, Municipal Products, some steel and stainless steel castings for Pumps and Valves, Pipe Fittings, etc.

Please feel free to contact us if you have any requests.

#### Quality Control



CMM



Tensile Test Machine



#### FAQ

Q1.How can we guarantee quality?

Always a pre-production sample before mass production; Always final Inspection before shipment

Q2.What's the production time for new molds and mass production?

10-20 days to make the new moulds, mass production takes around 15 days, can process urgently if need

Q3.Can you send me samples ?

Yes, Samples are for free, and freight is on your side.



**Sunrise Foundry CO.,LTD**

+86-15067447509

sales@greycastironcasting.com

greycastironcasting.com