



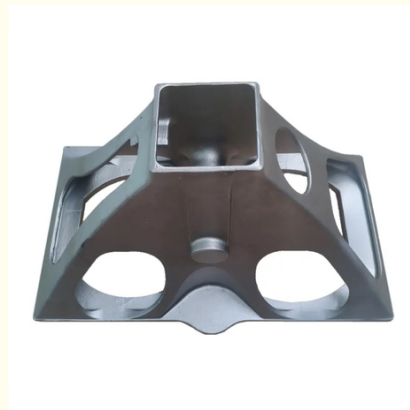
Stainless Steel Lost Wax Precision Casting Railway Parts

Our Product Introduction

for more products please visit us on greycastironcasting.com

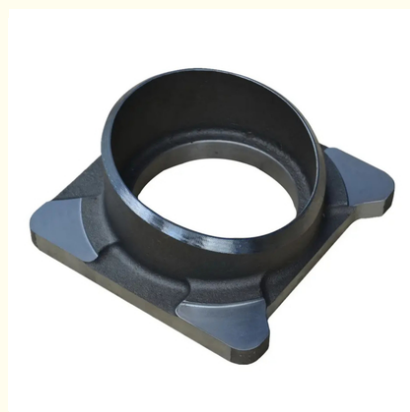
Basic Information

- Place of Origin: Mainland China
- Brand Name: NC0852
- Certification: ISO9001,CE,SGS
- Model Number: 0852
- Minimum Order Quantity: 100 pcs
- Price: Can talk
- Packaging Details: Wooden Case
- Delivery Time: 30 days
- Payment Terms: T/T, L/C
- Supply Ability: 60,000-80,000 pcs monthly



Product Specification

- Material: Stainless Steel
- Application: Railway
- Process: Precision Investment Casting
- Finish: Sand Blasting, Machining, Painting
- Tolerance: CT4-CT6
- OEM: Available



More Images



Product Description

Stainless Steel Lost Wax Precision Casting Railway Parts

Product Details

ITEM	DETAILS
Material	Carbon Steel, Stainless Steel, Alloy Steel, Iron, Copper, Aluminum
Surface Treatment	Painting, Galvanized, Dacromet, Powder Coating, Polishing, etc.
Application	Mechanical Components/parts, Boat parts and Marine hardware, Construction hardware, Auto parts and accessories, Medical Instrument parts, pump & valve parts and accessories, Impellers and propellers(propellers), Pipe Fittings or pipeline accessories, Other industry metal casting parts
Tolerances	Customers' drawing request
Standard	AISI, ATSM, UNI, BS, DIN, JIS, GB etc
Service	OEM/ODM
Heat Treatment	Annealing, Normalizing, Homogenization Treatment, Quenching, Tempering, Stabilizing, etc.
Process	Mold design→Wax injection→Assembly tree→Shell making→Dewax→Casting→Knockout→Cut off→Grinding→Inspection and post treatment→Finished casting
Design	Various type of 2D or 3D drawings are acceptable, such as JPG, PDF, DWG, IGS, STP, STEP etc.
Quality Control	Dimension inspection, Chemical composition analysis (Spectrum analysis), Mechanical property testing, X-Ray inspection, Dye penetrant inspection, Magnetic powder inspection, Metallographic inspections

Production Process

-Mold design

According to customers' drawing, our engineer will finish the mold design. And then make the mould according to the design.

-Wax injection

The wax is being injected by the machine. Wax design of the desired castings is produced by injection molding.

-Assembly tree

The patterns are attached to a central wax stick, to form a casting cluster or assembly tree.

-Shell making

The shell is built by immersing the assembly in a liquid ceramic slurry and then into a bed of extremely fine sand. Up to 6 layers may be applied in this manner. The shell will be dry in each layer making.

-Dewaxing

Once the ceramic is dry, then heating. The wax will be melted out. The melted wax will be flow out from the shell.

-Casting

In the conventional process, the shell is filled with molten metal by gravity pouring. As the metal cools, the parts and gates, sprue, and pouring cup become solid casting.

-Knock-out

When the metal has cooled and solidified, the ceramic shell will be broken off by vibration or a knock-out machine.

-Cut off

The parts are cut away from the central spruce using a high-speed friction saw.

-Grinding

After the casting was cut off. The casting pouring part will be ground carefully.

-Inspection and post treatment

The casting will be inspected by the inspector as per the drawing and quality request. If there are unqualified parts. It will be repaired and inspected again.

-Finished casting

After surface finishing operations, the metal castings become identical to the original wax patterns.

-Machining

The casting blank will be machined by CNC according to customers' drawings.

-Testing

The finished parts will be tested by the professional inspection engineer.

-Packing

The qualified parts will be packed according to customers' request.



About Us

Sunrise Foundry is a professional Metal Foundry, located in Ningbo. We have been producing Gray Iron, Ductile Iron Castings and any other precision castings for more than 25 years.

We are dedicated to meet different requirements of various customers across the world, products are mainly involved Agricultural and Construction Machinery, Hydraulic, Mining industry, Municipal Products, some steel and stainless steel castings for Pumps and Valves, Pipe Fittings, etc.

Please feel free to contact us if you have any requests.

Quality Control



CMM



Tensile Test Machine



FAQ

Q: Are you a factory or trading company?

A: We're a direct factory, we have our own casting foundry and machining factory over 30 years.

Q: Do you make customized products based on our design drawings?

A: Yes, we are a professional metal fabrication factory with 20 experiences to make custom products according to clients' drawings.

Q: Will my drawing be safe after you get it?

A: Yes, we will not release your design to third party unless with your permission.

Q: What is the MOQ?

A: Usually we don't set MOQ, but the more, the cheaper. Besides, we are happy to make prototype or sample for clients to ensure quality standard.



Sunrise Foundry CO.,LTD



+86-15067447509



sales@greycastironcasting.com



greycastironcasting.com