

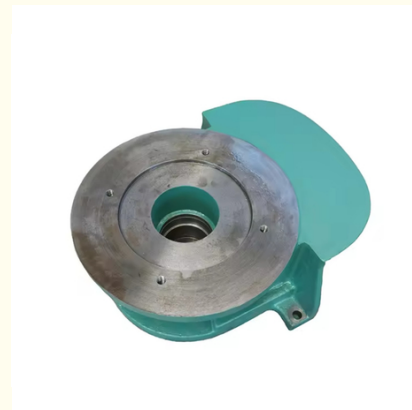


Sand Moulding Casting GGG40 Ductile Cast Iron Foundry Machinery Part

Our Product Introduction

Basic Information

- Place of Origin: Mainland China
- Brand Name: NC8581
- Certification: ISO9001,CE,SGS
- Model Number: 8581
- Minimum Order Quantity: 100 pcs
- Price: Can talk
- Packaging Details: Wooden Case
- Delivery Time: 30 days
- Payment Terms: T/T, L/C
- Supply Ability: 60,000-80,000 pcs monthly



Product Specification

- Material: Ductile Iron
- Application: Machinery Part
- Process: Iron Casting
- Finish: Sand Blasting, Machining, Painting
- Size: As Per Drawing
- OEM: Available
- Standard: ISO, DIN, ASTM, AISI, ASME, EN, BS, JIS, NF, CAS, GB
- Highlight: GGG40 sand moulding casting,
Machinery Part ductile cast iron foundry,
GGG40 ductile cast iron foundry



More Images



Product Description

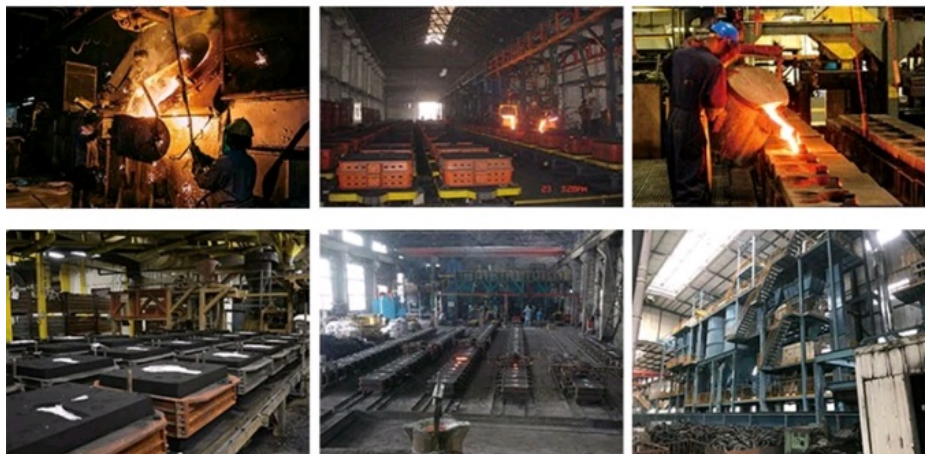
Sand Moulding Casting GGG40 Ductile Cast Iron Foundry

Product Details

Place of Origin	China
Application	Automotive Industry
Power Source	Electric
Certification	ISO, DIN, ASTM, AISI, ASME, EN, BS, JIS, NF, CAS, GB
Material	Iron
Products Material	Cast iron
Application	Industry,Machinery,Auto parts
Products enforce standard	ISO;DIN;ASTM;AISI;ASME;AWWA;JWWA,EN;BS;JIS;NF;CAS;GB
Technical products process	Green sand molding and shell molding process
Quality-system certification	DNV;PED;ISO 9001:2008
Finished product	CNC machining
Surface treatment	Electrostatic powder coating&blasting shooting
Foundry casting experience	From10mm to 2500mm
Products Weight	turbine housing casting since1974
Dimension	0.1kg~1555kg

Production Process

WorkShop



About Us

Sunrise Foundry is a professional Metal Foundry, located in Ningbo. We have been producing Gray Iron, Ductile Iron Castings and any other precision castings for more than 25 years.

We are dedicated to meet different requirements of various customers across the world, products are mainly involved Agricultural and Construction Machinery, Hydraulic, Mining industry, Municipal Products, some steel and stainless steel castings for Pumps and Valves, Pipe Fittings, etc.

Please feel free to contact us if you have any requests.

Quality Control



CMM



Tensile Test Machine



FAQ

1. Are you a trading company or a manufacturer?

We are a manufacturer, so we have cost advantage and you can enjoy faster communication on product detail.

2. How long does it take to get a quotation?

Generally, it takes 2 work day to make the offer. However, for urgent inquiry, we can provide the quotation within 12 hours.

3. How do you control your quality?

We use top quality material to manufacture our products in order to guarantee prime quality. All the products will be fully inspected before delivery.

4. Can I get a sample to check your quality?

Yes, of course. It is our pleasure to send a sample for you to check our product quality.



Sunrise Foundry CO.,LTD



+86-15067447509



sales@greycastironcasting.com



greycastironcasting.com