



## 304/316 Stainless Steel Casting Pipe Clamp

Our Product Introduction

for more products please visit us on [greycastironcasting.com](http://greycastironcasting.com)

### Basic Information

- Place of Origin: Mainland China
- Brand Name: NC8742
- Certification: ISO9001,CE,SGS
- Model Number: 8742
- Minimum Order Quantity: 100 pcs
- Price: Can talk
- Packaging Details: Wooden Case
- Delivery Time: 30 days
- Payment Terms: T/T, L/C
- Supply Ability: 60,000-80,000 pcs monthly

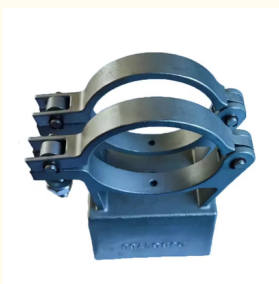


### Product Specification

- Item Name: Pipe Clamp
- Material: Stainless Steel
- Process: Precision Investment Casting
- Weight: 0.05kg~20kg
- Finish: Sandblasting
- Tolerance: Customer's Drawing Request



### More Images



## Product Description

### 304/316 Stainless Steel Casting Pipe Clamp

#### Product Details

Material	Carbon steel, Low alloy steel, Stainless steel, Heat resistance steel, Tool steel, etc.
Producing Process	investment casting
Surface Treatment	polishing, powder coating, zinc plating, chrome plating, heat treatment, tumbling polishing, electro-polishing.
Design	As per the customer's design, idea & samples; As per samples, we can provide surveying and drawing.
Packing	carton and pallet.
Inspection	SGS, ROHS, IATF16949:2016 or Third party inspection available upon customer's requirements.
Mainly Products	Machinery parts and components, Mobile parts, Pipe couplings, Tools hardware, Kitchen hardware, Shower hardware, Lamps hardware, Marine hardware, Building hardware, Handrail accessories, Glass connector, Castings of electrical appliance, Furnace parts and so on.

#### Production Process



#### About Us

Sunrise Foundry is a professional Metal Foundry, located in Ningbo. We have been producing Gray Iron, Ductile Iron Castings and any other precision castings for more than 25 years.

We are dedicated to meet different requirements of various customers across the world, products are mainly involved Agricultural and Construction Machinery, Hydraulic, Mining industry, Municipal Products, some steel and stainless steel castings for Pumps and Valves, Pipe Fittings, etc.

Please feel free to contact us if you have any requests.

#### Quality Control



CMM



Tensile Test Machine



#### FAQ

**Q: Are you trading company or manufacturer ?**

A: We are a professional manufacturer with over 14 years' export experience for designing and producing

**Q: How long is your delivery time?**

A: delivery samples within 25 work days, 60 work days for mass production.

**Q: Do you provide samples ? is it free or extra ?**

A: Yes, we could offer the sample for free charge but do not pay the cost of freight.

**Q: What is your terms of payment ?**

A: Payment ≤ 1000USD, 100% in advance. Payment > 1000USD, 30% T/T in advance ,balance before shipment.  
If you have another question, pls feel free to contact us as below:



**Sunrise Foundry CO.,LTD**



+86-15067447509



sales@greycastironcasting.com



greycastironcasting.com