



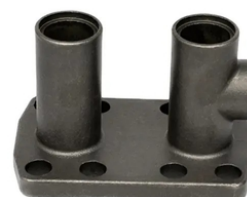
## Precision Carbon Steel Casting Metalworking Tool Accessories

### Our Product Introduction

for more products please visit us on [greycastironcasting.com](http://greycastironcasting.com)

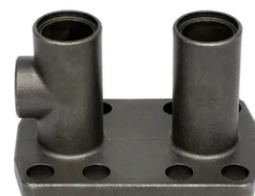
#### Basic Information

- Place of Origin: Mainland China
- Brand Name: NC7642
- Certification: ISO9001,CE,SGS
- Model Number: 7642
- Minimum Order Quantity: 100 pcs
- Price: Can talk
- Packaging Details: Wooden Case
- Delivery Time: 30 days
- Payment Terms: T/T, L/C
- Supply Ability: 60,000-80,000 pcs monthly



#### Product Specification

- Material: Carbon Steel
- Application: Metalworking Tool
- Process: Precision Investment Casting
- Size: Customized
- Tolerance: CT5-CT7
- Surface: Paint/Powder Coating/Oxidation



#### More Images



## Product Description

### Precision Carbon Steel Casting Metalworking Tool Accessories

#### Product Details

Material	Carbon steel, alloy steel, stainless steel, Aluminum alloy, Copper, ect.
Process	Lost wax casting + cnc machining
Casting dimension tolerance	CT7
Casting surface roughness	Ra 12.5 um
Casting weight range	0.1-90 kg
Casting Size	Max linear size: 1200 mm, Max diameter size: 600 mm
Machining Precision	Positioning accuracy 0.008 mm, Rep. position. accuracy 0.006 mm
Material standard	GB, ASTM, AISI, DIN, BS, JIS, NF, AS, AAR
Surface treatment	KTL (E-coating), Zinc plating, Mirror Polishing, Sand Blasting, Acid pickling, black oxide, Painting, Hot galvanizing, Powder coating, Nickel plating.
Service available	OEM & ODM
Quality control	0 defects, 100% inspection before packing

#### Production Process

Silica sol investment casting and water glass are the two primary investment casting methods now days. The main differences are the surface roughness and cost of casting. Water glass method dewaxes into the high-temperature water, and the ceramic mold is made of water glass quartz sand. Silica sol method dewaxes into the flash fire, and silica sol zircon sand makes the ceramic mold. Silica sol method costs more but has the better surface than water glass method.



#### Quality Control

Quality Control is one of the most important process in production. We insist that 100% inspection before shipment and ensure parts without any flaws when sending out.

We have complete quality inspection facilities including mechanical testing, chemical analysis, tensile strength, hardness, spectrometer, ultrasonic testing, etc.



CMM



Tensile Test Machine



#### FAQ

1. What is your payment term ?

T/T, L/C, Western Union, PayPal, Trade Assurance etc...

2. What is your delivery time for this order ?

Normally our delivery time is 30-35 days. It also should be depend on what kind of product and the quantity you require. But if we have the products in stock, then the delivery time will be in about 10 days or less.

3. Can you send me samples then I can feel your quality ?

Yes, of course. Free samples are available.

4. Can you accept customized orders?

Yes, any customized product is available. You can directly send us your design product draft to us, then we will discuss with our professional designers and confirm all right information to you.



**Sunrise Foundry CO.,LTD**



+86-15067447509



sales@greycastironcasting.com



greycastironcasting.com