



Investment Casting Plain Blade Wear Resistance Part for Agriculture Machinery

Our Product Introduction

Basic Information

- Place of Origin: Mainland China
- Brand Name: NC5622
- Certification: ISO9001,CE,SGS
- Model Number: 5622
- Minimum Order Quantity: 100 pcs
- Price: Can talk
- Packaging Details: Wooden Case
- Delivery Time: 30 days
- Payment Terms: T/T, L/C
- Supply Ability: 60,000 pcs monthly

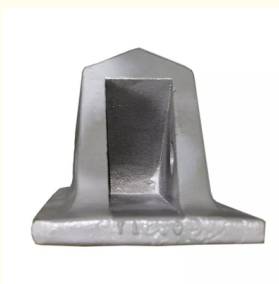


Product Specification

- Item Name: Plain Blade
- Application: Agriculture Machinery
- Process: Precision Casting
- Finish: Sandblasting
- Size: As Per Drawing
- Inspection: 100%



More Images



Product Description

Investment Casting Plain Blade Wear Resistance Part for Agriculture Machinery

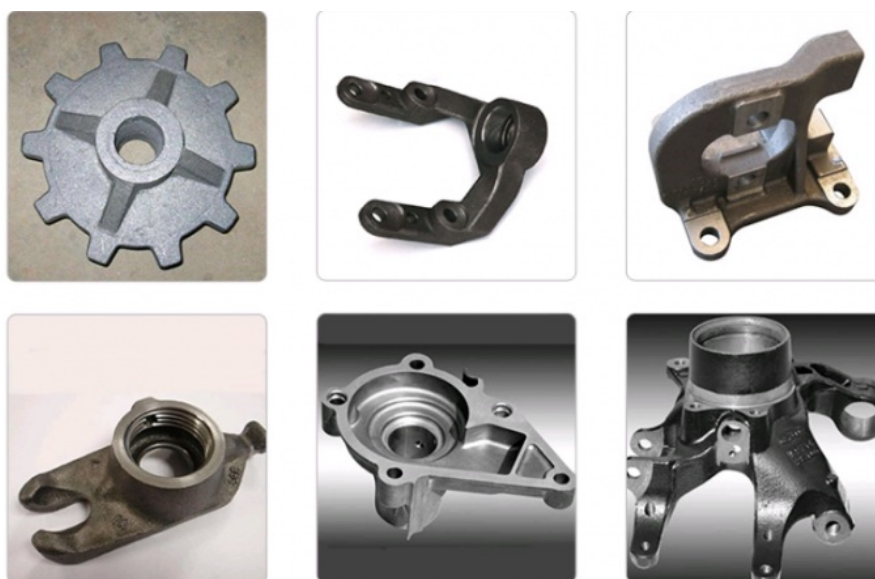
Product Details

Manufacturing Method	Investment Casting(Lost Wax Casting) Fabrication Sand Casting Machining
Material Standard	GB, ANSI, BS, DIN, JIS,ASTM,ASME,AISI, etc
Weight Range	0.005 kgs to 100 Tons
General Casting Tolerance	ISO 8062 / Customized
Mould Manufacturing	Yes
Casting Stimulation	Yes
Quality Standard	ISO 9001

Factory Workshop



Product Show



Our Service

Our company has strong R&D capability and develops many new products every year. In production, we strictly follow the ISO 9001 quality system to control quality and arrange production:

1. Don't accept defective, strict inspection of supplier's raw materials.

2. Don't manufacture defective, the production process are strictly controlled. For all products, the workers are strictly self-inspected on each machining process, and the quality inspectors do regular inspection and spot inspection.
3. Don't transferring defective, the defective products found in the previous process shall never be allowed to be transferred to the next process. Before shipment, the finished products shall be inspected again, and if any quality problems be found, and the products shall be reworked or rejected according to the relevant requirement.

Quality Control



CMM



Tensile Test Machine



FAQ

Are you a factory or trade company?

A: We are a factory with over 20 years in casting,,fabrication and machining. We service customers in various fields such as mining, agriculture, car parts ,etc.

How to quote?

A: Received the sample or drawing, then we will make the quotation.

How about the MOQ?

A: Depend on the weight and material, if it is our daily melting material, there is no MOQ.

Payment terms

Mold costs: 50% deposit,, balance after sample approval

Mass production: 50% deposit, balance upon B/L available.

Delivery time

A: Normally 25-40 days;

Standard or customized will both be available.

How about the packing?

A: Standard or customized will both be available.We will consider t



Sunrise Foundry CO.,LTD



+86-15067447509



sales@greycastironcasting.com



greycastironcasting.com