



China Metal Foundry Precision Lost Wax Stainless Steel Investment Casting Flange Tube

Our Product Introduction

for more products please visit us on greycastironcasting.com

Basic Information

- Place of Origin: Mainland China
- Brand Name: NC6356
- Certification: ISO9001,CE,SGS
- Model Number: 6356
- Minimum Order Quantity: 200 pcs
- Price: Can talk
- Packaging Details: Wooden Case
- Delivery Time: 30 days
- Payment Terms: T/T, L/C
- Supply Ability: 60,000 pcs monthly



Product Specification

- Part Name: Flange Tube
- Application: Auto
- Material: Stainless Steel
- Process: Precision Investment Casting
- Tolerance: Customized
- Service: OEM Service



More Images



Product Description

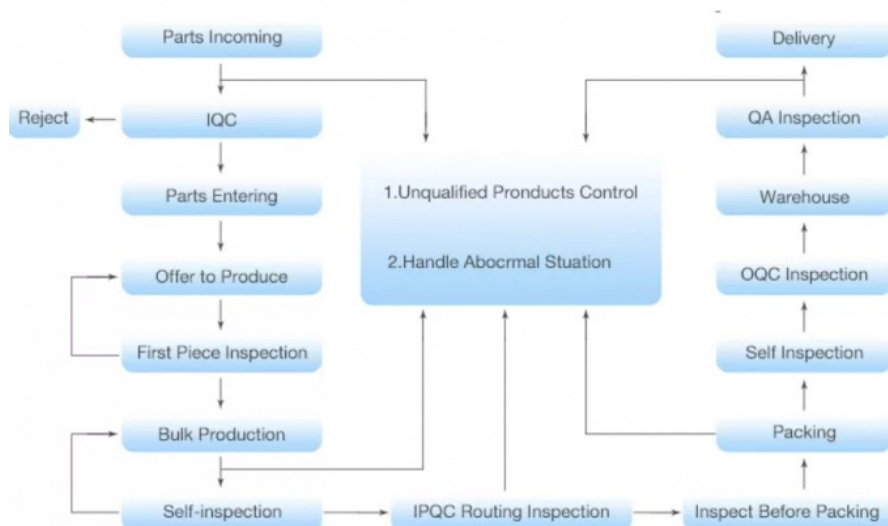
China Metal Foundry Precision Lost Wax Stainless Steel Investment Casting Flange Tube

About Us

Sunrise Foundry was founded in year 1990, specializing in manufacturing and exporting of machinery parts. With our fully owned manufacturing plants that all certificated with ISO9001 and TS16949, we can undertake processes such as CNC machining, investment casting, lost foam casting, steel forging, stainless steel casting, iron sand casting.

We are committed to team the talents, integrate industry resources, and strive to further develop into a great enterprise of machinery parts and equipment. We look forward to working with you to create a better future.

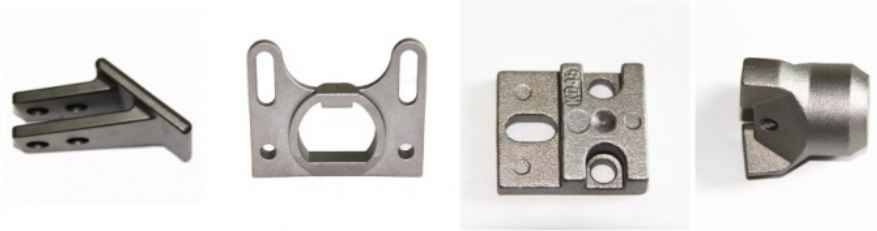
Production Process



Product Show

Precision casting

[See details >>](#)



Machining

[See details >>](#)



Quality Control

Process of Chemical Analysis

1. In house spectrometer with 24 channels capable of testing Fe, Ni, Co, Al based materials and also Nitrogen content.
2. All heats poured are tested on-line on Spectrometer.
3. All the scrap used are also tested before using.
4. Specimens are stored for particular period.



Process of Physical Testing

1. In house Universal Testing Machine.
2. In house Hardness Testing Machine.
3. In house Impact Testing Machine.

Various Test to be provided

Chemical Analysis, Tensile Test, Impact Test, Radiography (X-Ray), Dye Penetrate, Corrosion Test, MPT Test, Microstructure.

FAQ

Q: What is normal process cooperation would you have?

A: 1. We need the drawings for quote.

2. You accept the quotation and sign the contract, pay the mould cost, we will arrange to make samples for approval.

3. You approve the samples and pay the advance.

4. We arrange to manufacture and ship to you.

5. Pay balance.

6. Received the products and feedback.





+86-15067447509



sales@greycastironcasting.com



greycastironcasting.com