



## Ductile Iron Sand Casting Agriculture Machinery Parts Casting

Our Product Introduction

for more products please visit us on [greycastironcasting.com](http://greycastironcasting.com)

### Basic Information

- Place of Origin: Mainland China
- Brand Name: NC7635
- Certification: ISO9001,CE,SGS
- Model Number: 7635
- Minimum Order Quantity: 100 pcs
- Price: Can talk
- Packaging Details: Wooden Case
- Delivery Time: 30 days
- Payment Terms: T/T, L/C
- Supply Ability: 60,000 pcs monthly

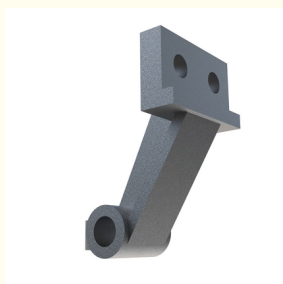


### Product Specification

- Item Name: Agriculture Machinery Parts
- Application: Agriculture Machinery
- Material: Ductile Iron
- Process: Sand Casting
- Surface Treatment: Sandblasting,Machining
- Size: As Per Drawing



### More Images

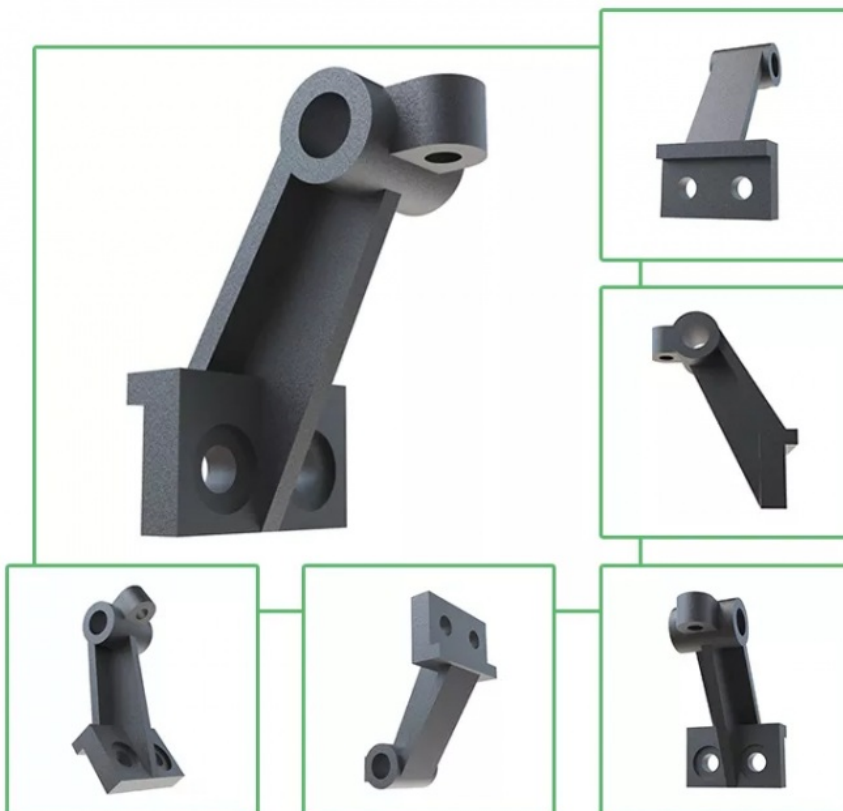


## Product Description

### Ductile Iron Sand Casting Agriculture Machinery Parts Casting

#### Product Details

|                      |                                   |
|----------------------|-----------------------------------|
| Material             | Ductile iron, Gray cast iron,etc. |
| Technology           | Sand Casting, Resin Sand Casting  |
| Standard             | ASTM,JIS,DIN,GB.                  |
| Single weight        | 0.5Kg-100Kg                       |
| Major export markets | Japan                             |
| Main products        | Agriculture Machinery             |



#### Production Process

## WorkShop



### Factory Introduction

Sunrise Foundry is a professional Metal Foundry, located in Ningbo. We have been producing Gray Iron, Ductile Iron Castings and any other precision castings for more than 25 years.

We are dedicated to meet different requirements of various customers across the world, products are mainly involved Agricultural and Construction Machinery, Hydraulic, Mining industry, Municipal Products, some steel and stainless steel castings for Pumps and Valves, Pipe Fittings, etc.

Please feel free to contact us if you have any requests.

### Quality Control



### FAQ

Can you make castings according to our drawings?

Yes, we can cast according to your drawings, two-dimensional drawings or three-dimensional models. If 3D drawings can be provided, the production efficiency will be higher. But without 3D, based on 2D drawings, we can still produce and process.

Can you make castings according to our samples?

Yes, we can measure according to your samples to draw tooling drawings.

What is your internal quality control equipment?

We are equipped with spectrometers to monitor chemical properties and tension testers to control mechanical properties.

How about the lead time?

Mold usually takes 3-4 weeks, and mass production usually takes 3-4 weeks. The specific time will be indicated in the quotation.



**Sunrise Foundry CO.,LTD**



+86-15067447509



sales@greycastironcasting.com



greycastironcasting.com