



Stainless Steel Investment Casting Pump Cover Impeller Housing Oil Pump Housing And Upper Cover

Our Product Introduction

for more products please visit us on greycastironcasting.com

Basic Information

- Place of Origin: Mainland China
- Brand Name: NC6835
- Certification: ISO9001,CE,SGS
- Model Number: 6835
- Minimum Order Quantity: 100 pcs
- Price: Can talk
- Packaging Details: Wooden Case
- Delivery Time: 30 days
- Payment Terms: T/T, L/C
- Supply Ability: 50,000 pcs monthly

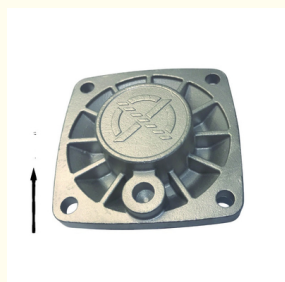


Product Specification

- Part Name: Pump Cover Impeller Housing
- Material: Stainless Steel
- Process: Precision Casting
- Color: RH/Plain
- Size: 117.5*117.5mm/78*78mm
- OEM: Available



More Images

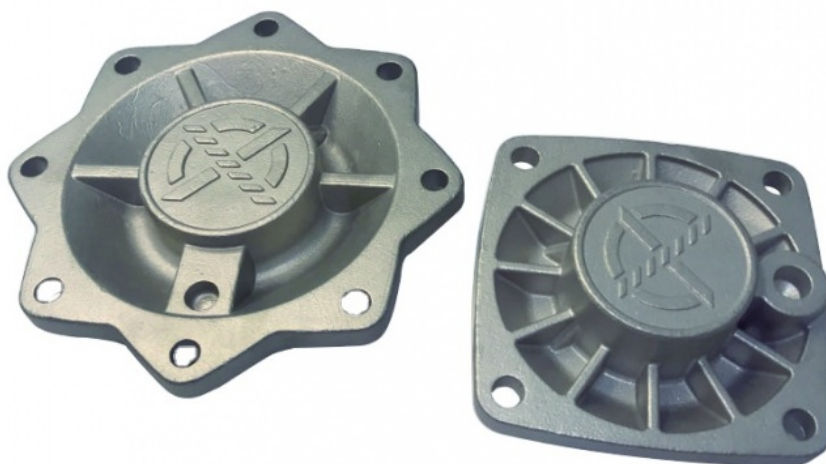


Product Description

Stainless Steel Investment Casting Pump Cover Impeller Housing Oil Pump Housing And Upper Cover

Product Details

Material	Carbon steel, Alloy steel, Stainless steel, Aluminium, Copper
Process	Lost wax casting + CNC machining
Casting tolerance	ISO 2768-mK, VDG P690 D1-D2, ISO8062-3-2007 DCTG4-6, GCTG4-6
Casting roughness	Ra1.6-3.2
Machining roughness	Ra0.8-3.2
Casting weight range	0.005-50kg
Material standard	GB, ASTM, AISI, DIN, BS, JIS, NF, AS, AAR....
Surface treatment	Zinc plating, Polishing, Anodizing, Painting, Nickel plating
Heat treatment	Annealing, Normalizing, Hardening, Tempering, Case hardening....
Service	OEM& ODM
Quality Control	IATF16949:2016, ISO14001:2015, ISO9001
Application	Pump Parts



Investment Casting



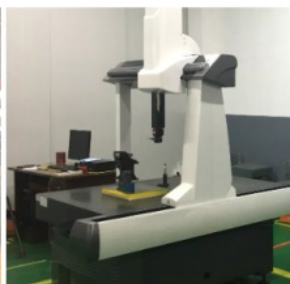
Lost Wax Casting



Machining Plant



Machining Plant



CMM

Factory Introduction

Sunrise Foundry is a professional Metal Foundry, located in Ningbo. We have been producing Gray Iron, Ductile Iron Castings and any other precision castings for more than 25 years.

We are dedicated to meet different requirements of various customers across the world, products are mainly involved Agricultural and Construction Machinery, Hydraulic, Mining industry, Municipal Products, some steel and stainless steel castings for Pumps and Valves, Pipe Fittings, etc.

Please feel free to contact us if you have any requests.

Quality Control

- 1) Checking the raw material after they reach our factory----- Incoming quality control (IQC)
- 2) Checking the details before the production line operated
- 3) Have full inspection and routing inspection during mass production---In process quality control(IPQC)
- 4) Checking the goods after they are finished---- Final quality control(FQC)
- 5) Checking the goods after they are finished-----Outgoing quality control(OQC)



CMM



Tensile Test Machine



FAQ

Q What is your production capacity ?

A. We are able to finish up to 2000 tons raw material every year , generally , one full 20 feet container (about 20 tons) can be done in 20- 25 days .

Q.How long I can get samples for approval before placing order ?

A. Just in one week for new samples that need to be done in new tools , and we can deliver samples within 24 hours for existing samples once received your request .

Q.What are your popular payment methods ?

A. T/T is our prior choose for all , of course , we are also accept L/C , Westunion , paypal .

Q . Can you provide custom service ?

A . Yes , we provide standard and custom service for all our products.



Sunrise Foundry CO.,LTD



+86-15067447509



sales@greycastironcasting.com



greycastironcasting.com