



## Carbon Steel Precision Investment Casting Gas Turbine Components

### Our Product Introduction

#### Basic Information

- Place of Origin: China
- Brand Name: NC7835
- Certification: ISO9001,CE,SGS
- Model Number: 7835
- Minimum Order Quantity: 100 pcs
- Price: Can talk
- Packaging Details: Crate
- Delivery Time: 35 days
- Payment Terms: T/T, L/C
- Supply Ability: 80,000 pcs monthly

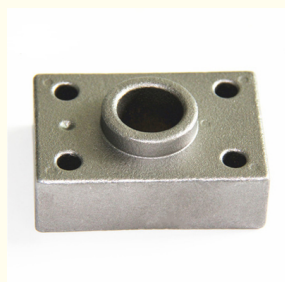


#### Product Specification

- Item Name: Gas Turbine Components
- Material: Carbon Steel
- Process: Precision Investment Casting
- Tolerance: 0.01mm~0.02mm
- Finish: Customized
- Size: As Per Drawing
- Inspection: 100%



#### More Images



## Product Description

### Carbon Steel Precision Investment Casting Gas Turbine Components

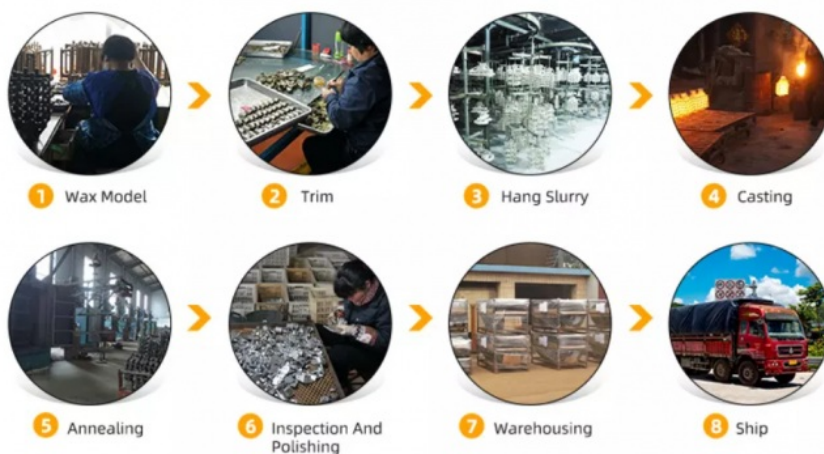
#### Product Details

Mainly Material	stainless steel, carbon steel, steel, aluminium, brass, bronze, copper
Process	investment casting, lost wax casting, silica sol casting, water glass casting, die casting
Casting tolerance	CT4-CT6 (GB/T 6414), CT7-CT9 (GB/T 6414)
Standard	AISI, ANSI, ASTM, JIS, GB, ISO, DIN
Certificate	TS16949, SGS, ISO, or as your requirement to do test by the third party
Machining	tapping, milling, grinding, drilling, cnc machining
Tolerance	+/-0.02mm or as drawing requirement
Surface treatment	polishing, mirror polishing, electrogalvanizing, sandblasting, shot blasting
Heat treatment	quenching and tempering, annealing, normalizing
Casting Roughness	Ra 1.6-Ra12.5

#### Process Flow

## PROCESS FLOW

Welcome to Our Website, We Are Happy to Serve You



#### Application



AEROSPACE&MILITARY INDUSTRY



ENERGY



**MINING&HEAVY MACHINERY**



**AGURICULTURE MACHINERY**

### About Us

Sunrise Foundry has expertised Customized mechanical parts in making cast iron, steel and stainless steel parts. We are professional at products designing, mold making, production, packaging. and we can provide the best products and service at a competitive price.

### Product Show

## << MORE PRODUCT >>



### Our Service

Our company has strong R&D capability and develops many new products every year. In production, we strictly follow the ISO 9001 quality system to control quality and arrange production:

1. Don't accept defective, strict inspection of supplier's raw materials.
2. Don't manufacture defective, the production process are strictly controlled. For all products, the workers are strictly self-inspected on each machining process, and the quality inspectors do regular inspection and spot inspection.
3. Don't transferring defective, the defective products found in the previous process shall never be allowed to be transferred to the next process. Before shipment, the finished products shall be inspected again, and if any quality problems be found, and the products shall be reworked or rejected according to the relevant requirement.

### FAQ

1. How about the payment terms?  
We usually accept T/T or L/C. other terms also could be negotiated.

2. What is your minimum order?

It depends on what you are buying. Normally, our minimum order is one 20' full container and LCL container (less than a container load) can be acceptable.

3. What is your delivery time?

FOB Ningbo or any Chinese port : 20-30days. If there are any parts in stock , our delivery time is only 7-10 days.



**Sunrise Foundry CO.,LTD**



+86-15067447509



sales@greycastironcasting.com



greycastironcasting.com