



Grey Cast Iron Casting Motor Parts Motor Housing

Our Product Introduction

for more products please visit us on greycastironcasting.com

Basic Information

- Place of Origin: Mainland China
- Brand Name: NC0352
- Certification: ISO9001,CE,SGS
- Model Number: 0352
- Minimum Order Quantity: 100 pcs
- Price: Can talk
- Packaging Details: Standard
- Delivery Time: 30-35 days
- Payment Terms: T/T, L/C
- Supply Ability: 50,000 pcs per month



Product Specification

- Part Name: Motor Housing
- Material: Grey Iron
- Process: Iron Casting
- Finish: Customized
- Application: Automatic, Machinery
- Size: As Per Drawing



Product Description

Grey Cast Iron Casting Motor Parts Motor Housing

Product Details

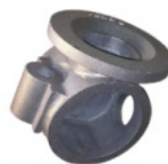
Material	Grey cast iron
Dimension (mm)	400x500
Weight (kg)	150
Technology	Lost foam casting
Surface Finish	Painting (if require)
Tolerance	Customer's Drawing Request
Application	Industry



Pump housing



Motor part



Motor part



Water meter box



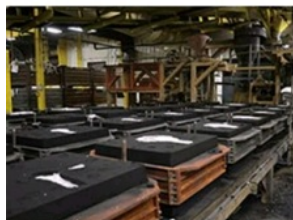
Coupling



Coupling

Production Process

WorkShop



About us

We are dedicated to meet different requirements of various customers across the world, products are mainly involved Agricultural and Construction Machinery, Hydraulic, Mining industry, Municipal Products, some steel and stainless steel castings for Pumps and Valves, Pipe Fittings, etc.

Please feel free to contact us if you have any requests.

Our Advantages

1. With more than 20 years' experience in casting
2. Near sea port and airport
3. Passed ISO9001:2008/Rosh/SGS
4. Good quality and strict delivery time
5. Spectral analysis of raw material and liquid melt

Our Service

Drawing: we can translate your original drawing,offer best suggestion on design

Quality: we have full set quality control system to guarantee the best quality.

Inspection: inspect in house,all our products must be checked 3 times before packing.



Sunrise Foundry CO.,LTD



+86-15067447509



sales@greycastironcasting.com



greycastironcasting.com