



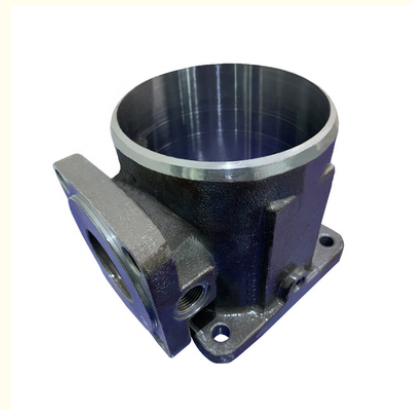
## Precision Investment Casting Valves Accessories Valve Body Valve House

Our Product Introduction

for more products please visit us on [greycastironcasting.com](http://greycastironcasting.com)

### Basic Information

- Place of Origin: Mainland China
- Brand Name: NC7563
- Certification: ISO9001,CE,SGS
- Model Number: 7563
- Minimum Order Quantity: 100 pcs
- Price: Can talk
- Packaging Details: Wooden Case
- Delivery Time: 35 days
- Payment Terms: T/T, L/C
- Supply Ability: 60,000 pcs monthly

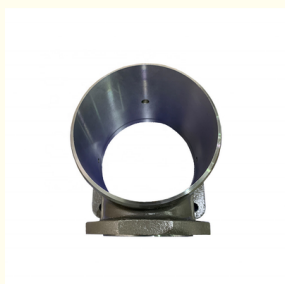


### Product Specification

- Part Name: Valve Body
- Application: Valve
- Material: Steel
- Production Process: Precision Investment Casting
- Surface: Sandblasting+Machining
- Requirements: Dimensional Accuracy And Shape Accuracy



### More Images



## Product Description

### Precision Investment Casting Valves Accessories Valve Body Valve House

Part Name	Valve Body
Processing Ability	Surface finishment: Ra1.6-Ra3.2
	Size tolerance: VDG P690 D2
	Maximum size: ≤1200mm×800mm×400mm
	Weight range: 0.1Kg-120Kg
Material	stainless steel, carbon steel, alloy steel, heat-resistant steel, hardend steel,mild steel
	Brass CuZn38,H62
	Aluminum bronze AB2,863
	Cast aluminium alloy ZL101,ZL114A,A356
Application	Mechanical Components/parts
	Boat parts and Marine hardware
	Construction hardware
	Auto parts and accessories
	Medical Instrument parts
	pump & valve parts and accessories
	Impellers and propellers(propellors)
	Pipe Fittings or pipeline accessories
	Other industry metal casting parts
Design	Various type of 2D or 3D drawings are acceptable,such as JPG,PDF,DWG,DXF,IGS,STP,X_T,SLDPRT etc.
Standards	AISI,ATSM,UNI,BS,DIN,JIS,GB etc.
Inspection	Dimension inspection
	Chemical composition analysis (Spectrum analysis)
	Mechanical property testing
	X-Ray inspection
	Dye penetrant inspection
	Magnetic powder inspection
	Metallographic inspections



### Production Process

## PRODUCTION PROCESS



**Mould**



**Waxes Injection**



**Starch Dipping**



**Shell Drying**



**Shell Baking**



**Steel Melting & Pouring**



**Shell Vibrating**



**Sand Blasting**



**Ready For Machining**

### Our Advantages



• 20 Years Casting Operation Experience



• Highly Precision Casting & Machining Service



• Higher Quality Control System



• Professional Technical & Commercial Communication & Support

### FAQ

1. How about the payment terms?

We usually accept T/T or L/C. other terms also could be negotiated.

2. What is your minimum order?

It depends on what you are buying. Normally, our minimum order is one 20' full container and LCL container (less than a container load) can be acceptable.

3. What is your delivery time?

FOB Ningbo or any Chinese port : 20-30days. If there are any parts in stock , our delivery time is only 7-10 days.



**Sunrise Foundry CO.,LTD**



+86-15067447509



sales@greycastironcasting.com



greycastironcasting.com