



Precision Investment Casting Bearing Seat for Forklift Parts

Our Product Introduction

for more products please visit us on greycastironcasting.com

Basic Information

- Place of Origin: Mainland China
- Brand Name: NC0845
- Certification: ISO9001,CE,SGS
- Model Number: 0845
- Minimum Order Quantity: 100 pcs
- Price: Can talk
- Packaging Details: Wooden Case
- Delivery Time: 35 days
- Payment Terms: T/T, L/C
- Supply Ability: 50,000 pcs per month



Product Specification

- Part Name: Bearing Seat
- Usage: Forklift
- Material: Steel
- Process: Precision Casting, Investment Casting
- Requirement: Dimensional Accuracy And Shape Accuracy
- QC: 100% Inspected
- Size: Customized



More Images



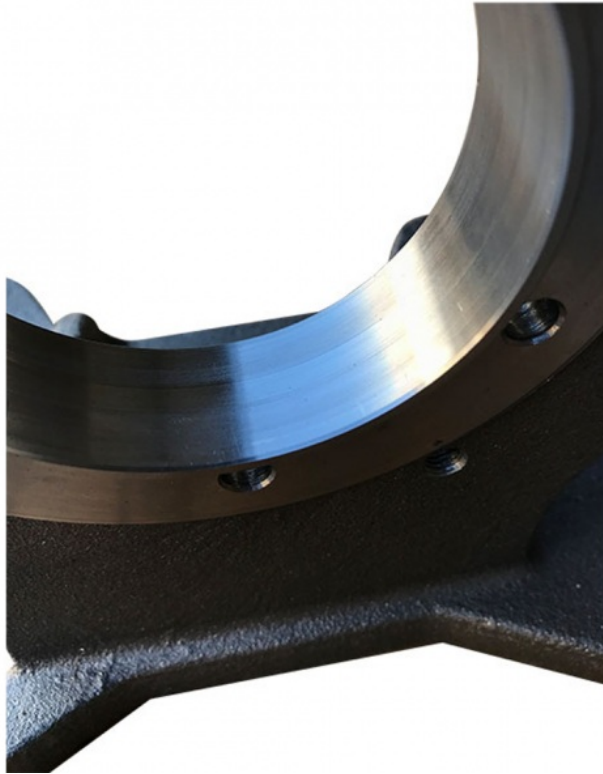
Product Description

Precision Investment Casting Bearing Seat for Forklift Parts

Product Details

Main Product : Lost Wax Casting , Investment Casting , Sand Casting	
Standard :	ASTM , AISI , BS , DIN , JIS , NF
Material :	Stainless steel (SS201 , SS303 , SS316 , SS416 , SS420) , carbon steel , alloy steel , heat resistant steel , etc
Weight Range :	0 . 002KG ~ 80KG (Depending on the actual design)
Design :	Pro / E , Auto CAD , Solid work , CAXA UG , CAM , CAE.
Process :	Casting + Machining (if you need) + Surface treatment
Procesing Method :	Lathing , Milling , boring , pulling , drilling , CNC machining (Futher Process if you need)
Heat Treatment :	Quenching , Normalizing , Quenching and Tempering , Chemical heat treatment
Surface :	Polishing , Plating , Painting , Anodizing , Powder Coating , Sand blasting....
Quality Control :	100 % inspection on critical dimensions or follow your special request
Machining :	Turning , milling , drilling , grinding , threading , CNC machining , etc





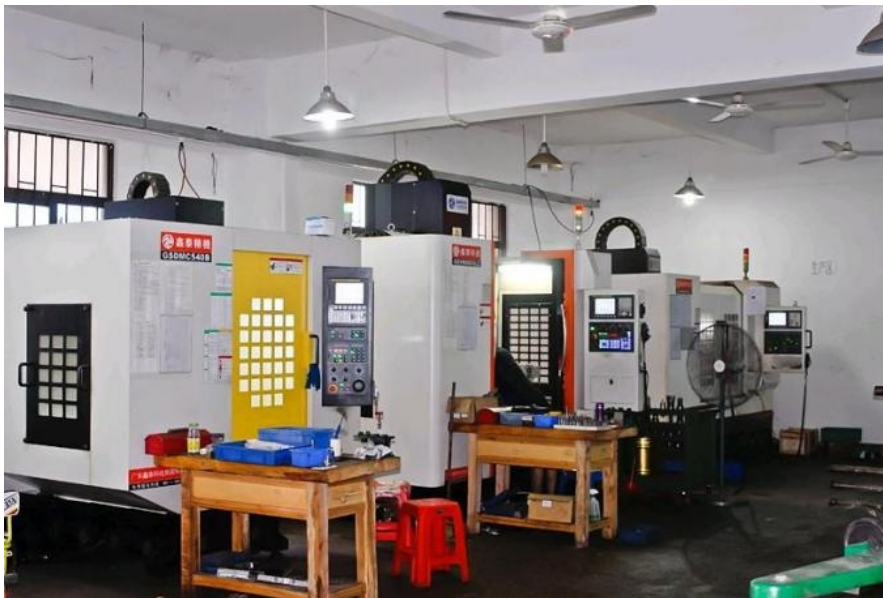
Production Process



Investment casting



Machining Capacity



Quality Control



CMM



Tensile Test Machine



FAQ

Q: What do I need for offering a quote ?

A: Please offer us 2D or 3D drawings (with material, dimension, tolerance, surface treatment and other technical requirement etc.), quantity, application or samples. Then we will quote the best price within 24h.

Q: What is your MOQ?

A: MOQ depends on our client's needs, besides, we welcome trial order before mass-production.

Q: What is the production cycle?

A: It varies a lot depending on product dimension, technical requirements and quantity. We always try to meet customers' requirement by adjusting our workshop schedule.

Q: What kind of payment terms do you accept?

A.: T/T, L/C, Escrow, paypal, western union, moneygram etc.

Q: Is it possible to know how is my product going on without visiting your company?

A: We will offer a detailed products schedule and send weekly reports with digital pictures and videos which show the machining progress.



Sunrise Foundry CO.,LTD



+86-15067447509



sales@greycastironcasting.com



greycastironcasting.com