



Cast Alloy Steel Casting Flange Ring For Valve Body Valve Cover

Our Product Introduction

Basic Information

- Place of Origin: Mainland China
- Brand Name: NCE645
- Certification: ISO9001,CE,SGS
- Model Number: E645
- Minimum Order Quantity: 100 pcs
- Price: Can talk
- Packaging Details: Wooden Case
- Delivery Time: 30-35 days
- Payment Terms: T/T, L/C
- Supply Ability: 50,000 pcs per month



Product Specification

- Material: Alloy Steel
- Process: Lost Wax Precision Casting
- Application: Valve Body Valve Cover
- Surface: Polishing
- Quality Control: 100% Inspection
- OEM: Available



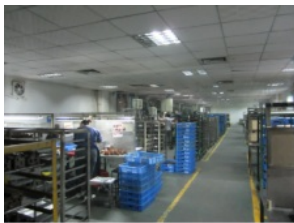
Product Description

Cast Alloy Steel Casting Flange Ring For Valve Body Valve Cover

Mainly Material	stainless steel, carbon steel, steel, aluminium, brass, bronze, copper
Process	investment casting, lost wax casting, silica sol casting, water glass casting, die casting
Casting tolerance	CT4-CT6 (GB/T 6414), CT7-CT9 (GB/T 6414)
Standard	AISI, ANSI, ASTM, JIS, GB, ISO, DIN
Certificate	TS16949, SGS, ISO, or as your requirement to do test by the third party
Machining	tapping, milling, grinding, drilling, cnc machining
Tolerance	+/-0.02mm or as drawing requirement
Surface treatment	polishing, mirror polishing, electrogalvanizing, sandblasting, shot blasting
Heat treatment	quenching and tempering, annealing, normalizing
Casting Roughness	Ra 1.6-Ra12.5



Production Process



Wax Injection



Shell Coating



Shell Drying



Quality Control

Checking the raw material after they reach our factory----- Incoming quality control (IQC)

Checking the details before the production line operated

Have full inspection and routing inspection during mass production---In process quality control(IPQC)

Checking the goods after they are finished---- Final quality control(FQC)

Checking the goods after they are finished-----Outgoing quality control(OQC)



CMM



Tensile Test Machine



Service

- 1.Your inquiry related to our product & price will be replied within 24hours.(E-mail or TradeManger)
- 2.Well-trained & experienced staff are to answer all your inquiries in English.
- 3.Working time: 8:30am – 5:30pm, Monday to Friday (UTC+8).
- 4.Your business relationship with us will be confidential to any third party.

5.Good after-sale service offered, please get back if you got question.

6.Welcome to our company.



Sunrise Foundry CO.,LTD



+86-15067447509



sales@greycastironcasting.com



greycastironcasting.com