



## High-strength Alloy Steel Casting Valve Body Pump Replacement Parts

Our Product Introduction

### Basic Information

- Place of Origin: Mainland China
- Brand Name: NC9846
- Certification: ISO9001,CE,SGS
- Model Number: 9846
- Minimum Order Quantity: 100 pcs
- Price: Can talk
- Packaging Details: Wooden Case
- Delivery Time: 30 days
- Payment Terms: T/T, L/C
- Supply Ability: 60,000 pcs monthly



### Product Specification

- Part Name: Valve Body Pump Replacement Parts
- Material: Alloy Steel
- Process: Precision Casting, Investment Casting
- Surface: Machining Or Spay Painting
- Size: As Per Drawing
- Inspection: 100%



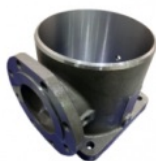
for more products please visit us on [greycastironcasting.com](http://greycastironcasting.com)

## Product Description

### High-strength Alloy Steel Casting Valve Body Pump Replacement Parts

#### Product Details

Material available	Allow Steel, Low carbon steel, C45, 20CrMnTi, 42CrMo, 40Cr, stainless steel. Can be adapted regarding customer requirements.
Surface treatment	Blacking, galvanization, chroming, electrophoresis, color painting, ...
Heat treatment	High frequency quenching heat treatment, hardened teeth, carbonizing, nitride, ...
Description	<p>Our product can be adapted: see the diagram and the chart below. Please give us the required model name so we can provide you the most accurate quotation.</p> <p>This chart if for reference, if you need different features, provideus all relevant details for your project and we will be glad to help you finding the product matching your need at the best quality with the lowest price.</p> <p>Please note the price and the MOQ may vary regarding the product you chose: do not hesitate to contact us to know more!</p>
Main uses and guarantees	<p>Extensive use: machinery, metallurgy, mine, building, electron, port etc, professional automation production and conveying transmission equipment</p> <p>Guarantee: High precision, high wear resistance, low noise, smooth and steady, high strength</p>



#### Our Service

1. We have our own factories that go from raw materials to formingWith synthetic
2. We guarantee the absolute quality of our products, and every step is strictly reviewed
3. We guarantee that the price will be lower than that of other manufacturers when the product quality is up to standard, and the price of the middleman will be competitive
4. Diversification of our products: According to customer requirements to customize the product.
5. To provide the best customer service: 7/24 hours online customer satisfaction to meet customer demand for products.

#### Inspection equipments

Spectrum analysis instrument, metallurgical analysis, tensile strength tester, hardness tester, roughness tester, deflection tester, impact test machine, projector, altimeter, scale micrometer, pressure tester, etc.



CMM



Tensile Test Machine



#### FAQ

Q: How long is your delivery time?

A: Mold leadtime: Within 30 days upon we receive the 50% of mold charges.

Batch production leadtime: With 15 days upon we receive the 30% deposit.

Q: Can you make the parts based on the samples?

A: Yes, we could make measurement based on your samples and make the tooling die.

Q: What is your terms of payment ?

A: Mold : 50% deposit + 50% after the samples is approved.

Batch production: 30% deposit + 70% before shipment.



**Sunrise Foundry CO.,LTD**



+86-15067447509



sales@greycastironcasting.com



greycastironcasting.com