



Hollow Grouting Anchor Bolt with Expansion Shell Mechanical Roof Bolt

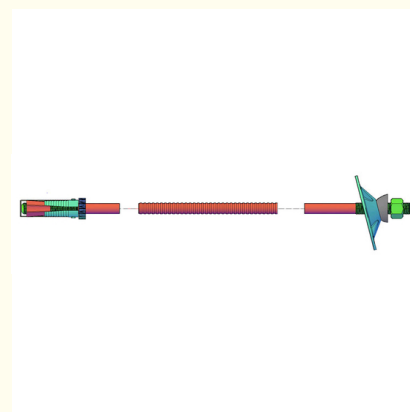
Our Product Introduction

Basic Information

- Place of Origin: Mainland China
- Brand Name: NC468
- Certification: ISO9001,CE,SGS
- Model Number: 468
- Minimum Order Quantity: 100 pcs
- Price: Can talk
- Packaging Details: Wooden Case
- Delivery Time: 30 days
- Payment Terms: T/T, L/C
- Supply Ability: 90,000 pcs monthly



Product Specification



More Images

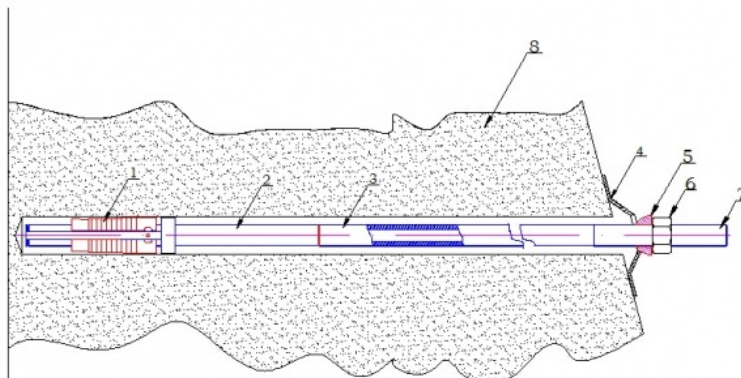
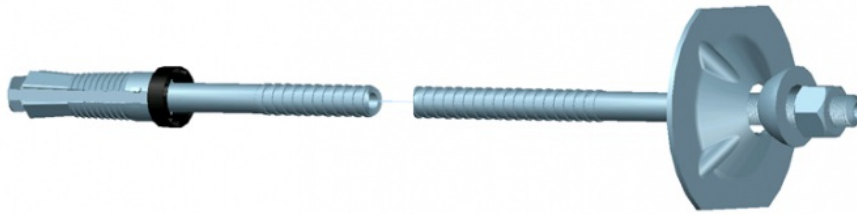


Product Description

Hollow Grouting Anchor Bolt with Expansion Shell Mechanical Roof Bolt

Description

Expansion shell bolts are a common style of area ground support. A point anchor bolt is a metal bar between 20 mm – 25 mm in diameter, and between 1 m – 4 m long. There is an expansion shell at the end of the bolt which is inserted into the hole. As the bolt is tightened by the installation drill the expansion shell expands and the bolt tightens holding the rock together. Mechanical bolts are considered temporary support.

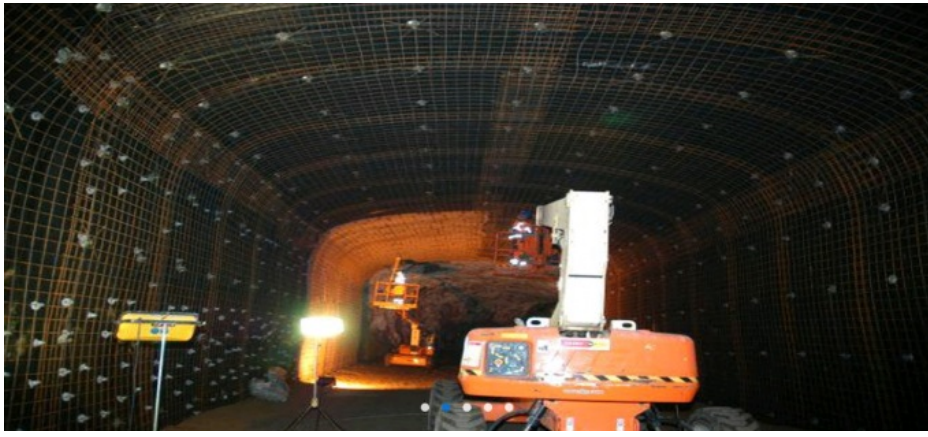


- 1 Expansion set
- 2 Tube bolt w/grooves
- 3 Stem/tube bolt
- 4 Bearing plate w/ventilation holes
- 5 Domed half ball, compact
- 6 Nut
- 7 YC-Bolt end for grouting
- 8 Cavities for grout

Related Products

Expansion shell, rock bolt, bearing plate, washer, mechanical bolt, coupling bolt

Application



Contact Us

Contact Person : Mr. Paul
Job Title : Sales Manager
Business Phone : +86-15867869948
Email : sales@greycastironcasting.com

Contact Person : Steven
Job Title : Sales Manager
Business Phone : +86-15067447509
Email : Info@greycastironcasting.com



Sunrise Foundry CO.,LTD



+86-15067447509



sales@greycastironcasting.com



greycastironcasting.com