



Boats Precision Investment Castings Customized Stainless Steel Vessel Accessories

Our Product Introduction

for more products please visit us on greycastironcasting.com

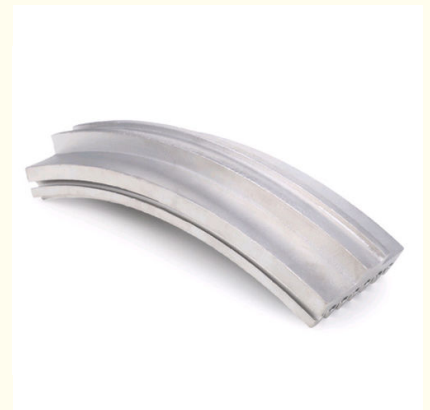
Basic Information

- Place of Origin: Mainland China
- Brand Name: NC725
- Certification: ISO9001,CE,SGS
- Model Number: 725
- Minimum Order Quantity: 100 pcs
- Price: Can talk
- Packaging Details: Wooden Case
- Delivery Time: 30 days
- Payment Terms: T/T, L/C
- Supply Ability: 80,000 pcs monthly



Product Specification

- Material: Stainless Steel
- Application: Vessel, Boats
- Process: Precision Investment Casting
- Surface Treatment: Polish, Coating, PVD, Sand Blast And Etc.
- Dimensions: Customized Dimension
- OEM: Available
- Highlight: **stainless steel investment casting, stainless steel precision casting, lost wax casting stainless steel**



More Images

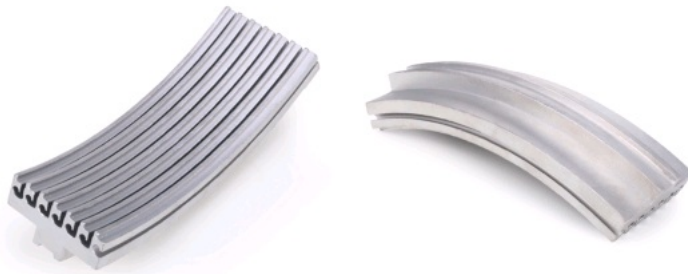


Product Description

Stainless Steel Precision Investment Casting Vessel Accessories Boats Parts

Product Details

Product Name	Stainless Steel Precision Investment Casting Vessel Accessories Boats Parts
Processed by	Silica Sol Investment Casting
Process Selection	Investment Casting Lost Wax Casting Sand Casting Metal Injection Molding
Machining Selection	CNC machining / lathing / milling / drilling / turning /grinding / shaping / boring
Heat Treatment Selection	Normalization / Annealing / Quenching / Tempering / Case Hardening / Nitriding
Surface Finish Selection	Polish / Plating / Coating / Passivation / PVD / Sand Blast
Material Selection	Stainless Steel / Carbon Steel / Alloy Steel/ Aluminum / Zinc / Iron / Brass / Alloy
Material Standard	Including but not limited to: ASTM(UNS, ANSI, AISI) A351 CF8 / A351 CF8M / 304 / 304N / 316 / 316L / S30400 / S30403 / 17-4PH / 1020 / 1025 / 1030 BS(EN) 1.4301 / 1.4306 / 1.4401 / 1.4404 / 1.4581 / 1504 304C15E / 3100 316C16 JIS SUS201 / SUS304 / SUS304L / SUS316 / SUS316L / SUS316N / SCS14 / SCS16 DIN C25 / G-X6CrNi189 / X5CrNi189 / X5CrNiMo1810 / X2CrNiMoN1812 for more metal selection, please contact us for the Metal Selection List
Tolerance Standard	ISO2768 Please contact us for our General Casting Tolerance Standard



WHAT IS INVESTMENT CASTING

Also named as “precision casting” or “lost-wax casting”, investment casting is a traditional but advanced metal-forming process. Wax pattern would be made according to the item shape, so that high dimensionally accurate & intricate parts could be produced.



Quality Control

Quality Control is one of the most important process in production. We insist that 100% inspection before shipment and ensure parts without any flaws when sending out.

We have complete quality inspection facilities including mechanical testing, chemical analysis, tensile strength, hardness, spectrometer, ultrasonic testing, etc.



CMM




Tensile Test Machine



 **Sunrise Foundry CO.,LTD**

 +86-15067447509

 sales@greycastironcasting.com

 greycastironcasting.com