



High Precision Ductile Cast Iron Sand Casting Car Steering Oil Pump Bracket

Our Product Introduction

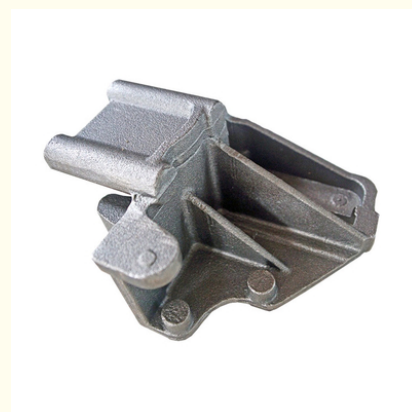
Basic Information

- Place of Origin: Mainland
- Brand Name: NC674
- Certification: ISO9001,CE,SGS
- Model Number: 674
- Minimum Order Quantity: 100 pcs
- Price: Can talk
- Packaging Details: Wooden Case
- Delivery Time: 30 days
- Payment Terms: T/T, L/C
- Supply Ability: 90,000 pcs monthly



Product Specification

- Item Name: Steering Oil Pump Bracket
- Material: Spheroidal Graphite Iron
- Technology: Sand Casting
- Dimensions: As Per Drawing
- Finish: Sandblasting
- OEM: Available
- Highlight: cast iron sand casting, ductile iron sand casting, resin sand casting



More Images



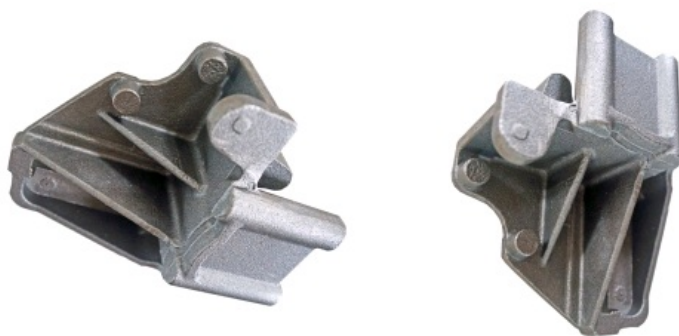
for more products please visit us on greycastironcasting.com

Product Description

High Quality Foundry Ductile Iron Sand Casting Car Steering Oil Pump Bracket

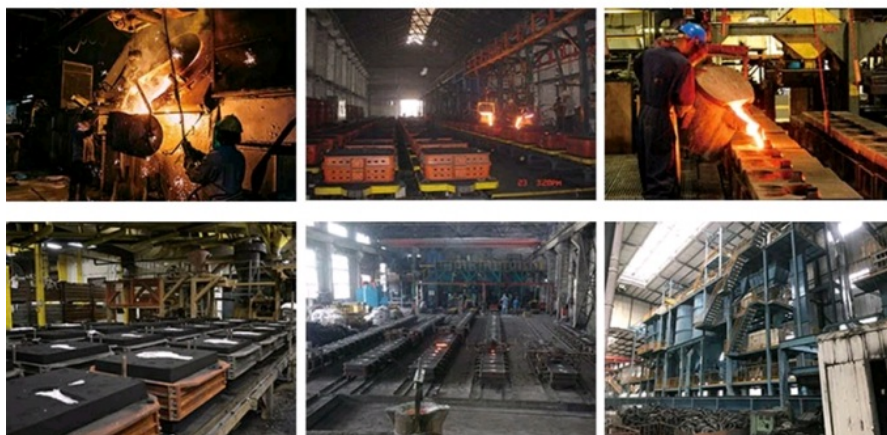
Product Details

Material	cast iron , grey iron , ductile iron
Material Standard	ASTM, DIN , JIS, BS
Surface Finish	Anti-rust oil, galvanized , painting
Weight	from 1kg to 150kg
Casting facility	auto production line , furnace, shot-blasting machine sand-blasting machine
Machining facility	CNC center , CNC machines, turning machines, drilling machines , milling machines, grinding machines
Applied Softwre	ProE (.igs , .stp) , Auto CAD , PDF, Jpeg, Jpg, Png
Heat Treatment	Annealing, tempering , normalizing, solid solution
Measuring Tool	CMM , vernier caliper, depth caliper, micrometer, pin gauge, thread gauge , height gauge
QC system	100% inspection before shipment
Package	bubble pack, carton , sea worthy plywood packing , or as per customers' requirements
Payment Terms	T/T , L/C, D/P , D/A
Shipment Terms	FOB , CFR, CIF



Production Process

WorkShop



About Us

Sunrise Foundry has a lot of experience in creating high-end sand castings from high-grade materials and consisting of complex geometries is beyond comparison. In our high-tech facilities, we offer both machine and manual molding operations in our resin sand casting processes.

We produce parts in low-to-high volumes and pour castings ranging from 0.5 kgs to 20 tons.

Our green sand castings range from 0.5 kgs to 150kgs.

FAQ

1. How long does it take to get a quotation?

Generally, it takes 2 work day to make the offer. However, for urgent inquiry, we can provide the quotation within 12 hours.

2. How do you control your quality?

We use top quality material to manufacture our products in order to guarantee prime quality. All the products will be fully inspected before delivery.

3. Can I get a sample to check your quality?

Yes, of course. It is our pleasure to send a sample for you to check our product quality.



Sunrise Foundry CO.,LTD



+86-15067447509



sales@greycastironcasting.com



greycastironcasting.com