



Galvanized Post Tension Accessories Anchor Barrel Wedge Mono Anchorage

Our Product Introduction

Basic Information

- Place of Origin: Mainland China
- Brand Name: NC612
- Certification: ISO9001,CE,SGS
- Model Number: 612
- Minimum Order Quantity: 100 pcs
- Price: Can talk
- Packaging Details: Crate
- Delivery Time: 30 days
- Payment Terms: T/T, L/C
- Supply Ability: 80,000 pcs monthly



Product Specification

- Item Name: Mono Anchorage
- Material: 40Cr
- Application: Bridge, Building, Highway, Railway, Etc
- Finish: Galvanized Or Black
- Wedge Materials: 20CrMnTi
- Sample: Available
- Highlight: **post tension accessories, prestressed anchorage, post tensioning system**



More Images



Product Description

Post Tension Accessories Anchor Barrel And Wedge Mono Anchorage

Description

Single Hole Anchorage can be used to lock the steel strand wires on/under classes of 2000Mpa standard strength, which is usually in diameters of 12.7mm/15.2mm. Other size standards can be customized, click customer service to contact us.

The hardness of anchorage: GB/T 14370-2015.

It has been verified by practice that various type of CM-W anchor, also can be used for the different kinds of strand wires which is ASTM/BS/JIS/JIG/AS and other international standards.

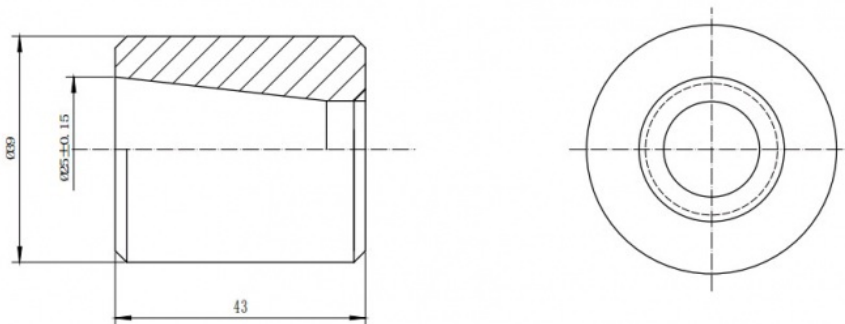
Application

Mainly used in the Coal mining, roadway. After tensioned and preloaded, transfer the tension to the supporting surface, maintain the roadway safe. Especially used in the engineering of prestressing tensioning structure for mines, tunnels, bridges.

Product Details

Product Name	Single Hole Mono Anchor
Material	40Cr
Color	Galvanized or Black
Standard	GB/ISO/ASTM/SGS
Product Shape	Round
Product Type	Single Hole
Place of Origin	China Mainland
Application	Bridge, Building, Highway, Railway, etc





Main Features

Adopting unique Electrophoretic technique to make anchors black-coated lasting best rust protection.
 Adopting advanced prestressed tensioning technique tensioning high and stable load
 Easy in installation and long time maintenance.

Our Service

Our company can design and produce anchorages of any specifications according to demands of customers.

Wide applications it is adaptable for strands with diameters from $\Phi 9.5\text{mm}$ to $\Phi 21.6\text{mm}$, with standard strength of 2000Mpa or lower. With Compacted structure, easy operation, safety and labor saving, high anchoring efficiency and reliable anchorage.

Our anchorage products are widely used for different projects, such as road and railway bridge, large scale industrial factory, high rise building, Hydroelectric dam, etc.

FAQ

1. Q: Can the Buyers Visit the Factory?

A: Yes. We all think the best way to guarantee the quality of products. In some condition we could offer a Sample for the customer if you pay for the express cost.

2. Q: Where is Payment ways?

A: Both T/T payment and irrevocable L/C at sight. For the T/T payment, There has 30% prepayment in advance and the balance payable against copy of B/L.

3. Q: If accept OEM service to made product as per customer offering drawing?

A: Yes, we can offer OEM service. We also offer customers new product design, non-standard design and prestressing construction plan



Sunrise Foundry CO.,LTD



+86-15067447509



sales@greycastironcasting.com



greycastironcasting.com