



Carbon Steel Lost Wax Precision Investment Castings Shape Crank Arm

Our Product Introduction

Basic Information

- Place of Origin: Mainland China
- Brand Name: NC671
- Certification: ISO9001,CE,SGS
- Model Number: 671
- Minimum Order Quantity: 100 pcs
- Price: \$1-50
- Packaging Details: Wooden Case
- Delivery Time: 20 days
- Payment Terms: T/T, L/C
- Supply Ability: 80,000 pcs monthly



Product Specification

- Highlight: steel investment casting, investment and precision casting, lost wax casting



More Images

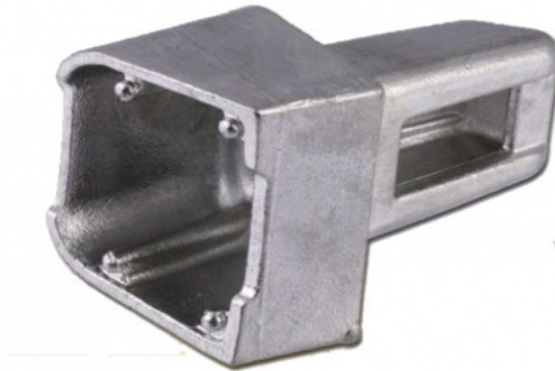


Product Description

Carbon Steel Precision Investment Lost Wax Casting Shape Crank Arm

Description

Investment casting lost wax casting Precision casting	Stainless steel casting; Alloy steel casting; Carbon steel casting
Machining	Drilling, Reaming and tapping; CNC Turning machining CNC Milling machining; wire EDM
Heat treatment	Annealing; Solution; Normalizing; Tempering Quenching; Induction hardening; Hardening and tempering
surface treatment	Manual polishing; Electro-polishing; Electro-plating power coating; Tumbling



Products:

turbocharger or supercharger, turbine blade, turbo impeller, nozzle, stainless steel valve, stainless steel pipe fittings, flanges, marine hardware, automotive parts and construction hardware

Lost Wax Investment Casting Process

1. Making Metal Pattern
2. Making Wax Mold
3. Repairing Wax Mold
4. Burn Water Glass Shell
5. Melting Steel Materials
6. Pouring melted steel into molds
7. Cleaning and machining steel castings



Advantages

- 1, The ability to casting all grades of steel and iron, and meet GB.ASTM. AISI. DIN. BS. JIS standard and so on.
- 2, With ISO9001:2008 and TS16949 certificate, The parts we produced without hole or crack or any other defect.
- 3, Furnace capacity 8ton, means the max weight per piece could reach 11ton.
- 4, Advanced inspection equipments, e.g. Direct-Reading Spectrometer, Mechanical Properties Tester, Hardness Tester, Metallographic Microscope, Nondestructive Tester, CMM etc.
- 5, Attractive foundry price.
- 6, Big capacity: 160000Ton / year

FAQ

Q1: What about the leading time?

A1: In general, the leading time is about 35 days. But please confirm the exact delivery time with us as different products and different quantity will have different leading time

Q2: How to get a sample?

A2: Sample order is acceptable. Please contact with us and make sure what sample do you need, in general, It will take 25 days to finish your sample.

Q4: How about the payment clause?

A4: We accept 30% T/T in advance, the 70% balance before the delivery.



Sunrise Foundry CO., LTD



+86-15067447509



sales@greycastironcasting.com



greycastironcasting.com