



Adjustable Base Jack Plate Scaffolding Base Plate for Construction Support

Our Product Introduction

Basic Information

- Place of Origin: Ningbo, China
- Brand Name: NC143
- Certification: ISO9001
- Model Number: 143
- Minimum Order Quantity: 50 pcs
- Packaging Details: Customized
- Delivery Time: 25 days
- Payment Terms: T/T, L/C
- Supply Ability: 100,000 pcs per month



Product Specification

- Type: Scaffolding Base Plate
- Material: Q235, Q345
- Size: 30/32/34/36/38/48mm
- Application: Support Scaffolding System
- Safety Load: 15KN-49KN
- Surface: Hot Dip Galvanized
- Highlight: scaffolding fittings, scaffolding parts



More Images



Product Description

Adjustable Base Jack Plate Scaffolding Base Plate for Construction Support

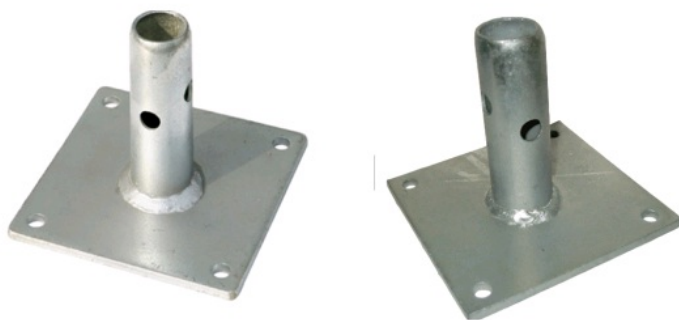
Description

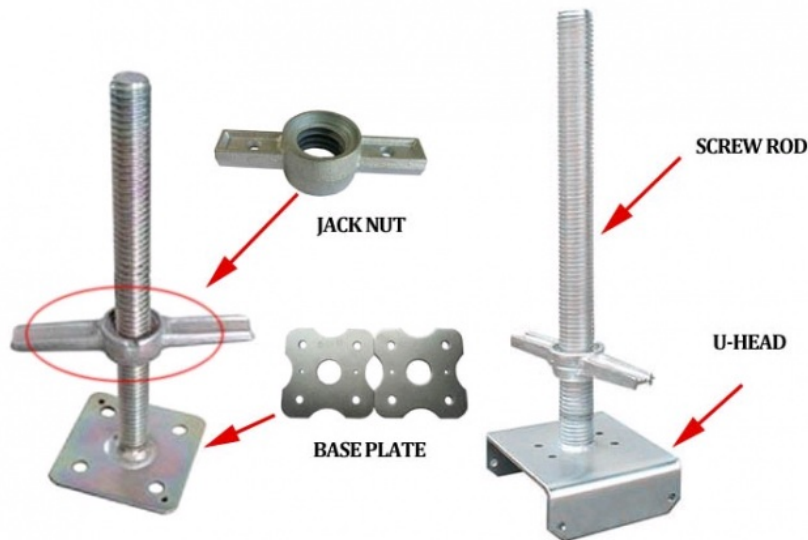
Screw Jack Base

- 1 .Surface Treatment: Galvanized,,powder coated
2. One set includes: inner pipe/upper tube,outer pipe/lower tube,screw pipe, nut,handle,pin
- 3 .Diameter size: Hollow type $\phi 48 \times 4.0$ $\phi 38 \times 4.0$
Solie type $\phi 32 / \phi 34$
- 4: Height of jack base :300mm/450mm/500mm/600mm/750mm/950mm/1000mm
- 5:U head jack base size;100*100*45*3.5mm/165*165*100*4mm or customized
- 6: Base plate:120*120*5mm/150*150*6mm/140*140*4mm

Specification

Item	Scaffolding Leveling Jack with Swivel Base Plate
Material	Q235
Dimensions	1 3/8"x24"
Surface	Hot-dip galvanization, electro galvanization
Standard	EN74
Note	OEM service is available
MOQ	1000pieces
Package	in steel pallet, or as your request
Payment Terms	TT,L/C, we can contact in detail
Delivery Time	30 days upon prepayment





SIZE	M30*600mm(solid)	M32*600mm(solid)	M34*600mm(solid)	M38*600mm(Hollow)
TYPE	base jack	U head	base jack	U head
Weight	3.67kg	4.22kg	4.2kg	4.75kg
Finished	galvanized/Painted			

Production Equipment

We have full set of production equipment, including model machine, punching machine, rolling machine, sand blasting and etc. These production equipments will show how the products are produced and we also can produce as your requirements using these equipments.

Research & Development

Our factory have our own R&D person and moulding workshop, all production problem and researching work could be solved and done by ourselves.

Quality Control

Recognizing that quality control is a key factor that determines success in overseas markets, our factory uses state-of-the-art facilities to ensure products meet the standards in the United States and European countries.

Our Advantages

1. Globally acceptable quality: The products offered by us are thoroughly examined by our experienced professionals to ensure their durability, reliability and long service life. (ISO 9001)
2. Competitive price: direct manufacturer, reducing all unnecessary cost for you.
3. Professional team:20 years foreign customers service experience. Over 10 years investment casting manufacture. Almost 35% high educated people.



Sunrise Foundry CO.,LTD



+86-15067447509



sales@greycastironcasting.com



greycastironcasting.com