



## Road Bridge Steel Post Tension Anchor Prestressed Anchorage System Components

Our Product Introduction

for more products please visit us on [greycastironcasting.com](http://greycastironcasting.com)

### Basic Information

- Place of Origin: Ningbo China
- Brand Name: NC120
- Certification: ISO 9001
- Model Number: 120
- Minimum Order Quantity: 1 pcs
- Packaging Details: Wooden Case
- Delivery Time: 35 days
- Payment Terms: L/C, , T/T,
- Supply Ability: 160,000 pcs per month



### Product Specification

- Item Name: Concrete Prestressed Anchorage
- Material: Steel
- Application: Road, Bridge, Railway,
- PC Strand Diameter: 12.7mm-15.24mm
- Hole Count: 1-55
- HS Code: 7316000000
- Highlight: **post tensioning system, prestressed anchorage**



### More Images



## Product Description

### Road Bridge Steel Post Tension Anchor Prestressed Anchorage System Components

#### Application

It has been widely adopted by modern construction, especially used in pre-tension or post-tension for concrete constructions as building materials, such as bridge construction, railway and highway construction, underground structures, buildings and channel construction, etc.

#### Structure

stressing-end anchorage, fixed-end anchorage, couple and corrugated pipe.

Wedge is the key part of prestressing anchor system, which is made by high-class alloy steel 20CrMnTi. Its form is divided into two-chip and three-chip. The system apply to the two-chip YM15 series, it can be used for round anchorage, flat anchorage, but also used for porous coupler.

Anchor head is the key part of bearing the prestressing tension, The round anchor head is made by 45# high-quality carbon construction steel, and the flat anchorage is made by 40Cr steel. Anchor head include round anchor head and flat anchor head.

Anchor bearing plate is the key component, which transfer the load from anchor head to concrete under anchor. The method of transfer and distribution of stress affect the anti-cracking and load capacity of concrete.

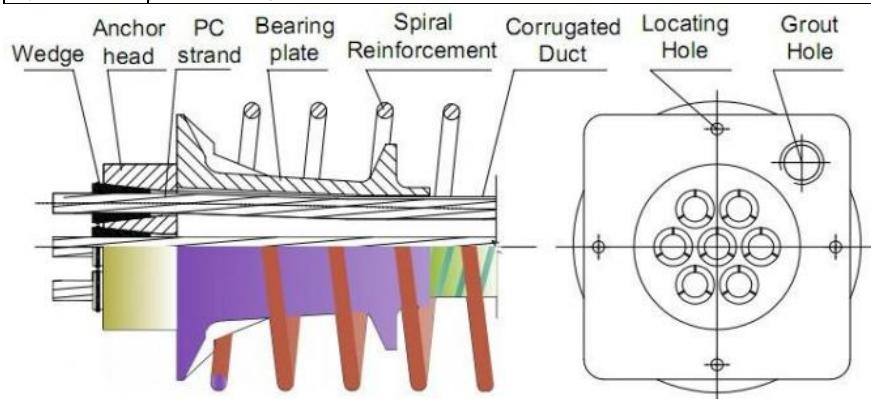
Spiral reinforcement is used for distributing the concrete and strengthening tendons.

#### Features

1. Comply with GB / T 14370-2007 Standard.
2. Type: prestressed wire suspender anchorage for upset head anchorage system.
3. Stable, reliable anchorage performance.
4. Providing after-sale service.
5. Resistant to rust.

#### Product Details

Product name	Steel wire post tension anchor
Application	Bridge, Railway, Highway, Engineering construction.
Certificate	ISO9001:2008
PC strand diameter	12.7mm-15.24mm
MOQ	100 Sets
Color	Standard
Packing	Customers' Requirements
Diameter	Standard
Other produces	Jacks , Oil pump , Mixer ,
Product	freyssinet anchorage system, freyssinet system of prestressing, freyssinet system of post tensioning
Keywords	post tensioning



#### Quality Control

1. All the raw materials will be tested before putting into the production.  
Material for Anchor head: 45# steel or 40 Cr  
Material for Wedge: 20 CrMnTi
2. Crack detection and measurement for all the anchor heads and wedges.
3. Hardness test for the anchor heads and wedges.
4. Static load test.

## FAQ

1) Q: Do you supply OEM Service or Customized-made Flat Anchorage System?

A Yes, we do. Actually, we have cooperated with many famous PT Supplier in whole world. Just send us your drawings when need to be customized.

2) Q: Do you provide free samples?

A: Yes, sure, we provide free samples for your testing.

3) Q: How is the delivery lead time:

A: Goods in stock: within 3 days, Goods out of stock(7 days), Goods need to be customized(10-15 days).

4) What is your Minimum Order?

A: MOQ: 100 pieces.

5) Q: Payment Terms?

A TT, LC

6) Q: How to transport the goods:

A: by shipping, air flight, express.



**Sunrise Foundry CO.,LTD**



+86-15067447509



sales@greycastironcasting.com



greycastironcasting.com