



High Precision Investment Castings Transmission Box Cover For Power Transmission Machinery

Our Product Introduction

for more products please visit us on greycastironcasting.com

Basic Information

- Place of Origin: China Mainland
- Brand Name: NC-04
- Certification: SGS
- Model Number: NB001
- Minimum Order Quantity: 10pcs
- Price: USD1-USD50
- Packaging Details: Carton/Crate/Customized
- Delivery Time: 25-30 days
- Payment Terms: T/T, L/C, Western Union
- Supply Ability: 20000pcs/month



Product Specification

- Product Name: Chain Box/Transmission Box
- Production Process: Gray Iron Casting
- Material: HT250
- Weight: 5KG-10KG
- Standard: ASTM,DIN,EN,BS,AS
- Surface Treatment: Anodize,Nickel Plating, Galvanize, Powder Coating, Polish Etc.
- Highlight: **gray iron casting process, green sand casting**



More Images



Product Description

High Precision Investment Castings Transmission Box Cover For Power Transmission Machinery

Gray Iron Applications

The following is the common application for grey cast iron for your reference.

G200 and G250:

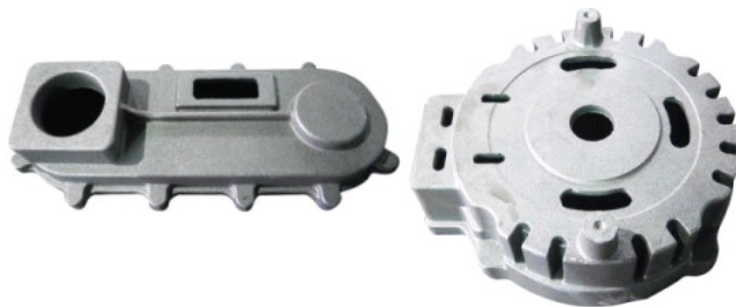
Requirements withstand greater load and a certain degree of tightness or corrosion resistance of the more important castings such as cylinder, gear, base, flywheels, bed, cylinder block, cylinder liner, piston, gear box, brake wheel, coupling Plate, medium pressure valve, etc.

G300 and G350

Under high load, wear and high air tightness important castings, such as heavy machine tools, shears, presses, automatic lathe bed, frame, frame, high-pressure hydraulic parts, piston rings, force larger gear, Cams, bushings, large engine crankshaft, cylinder block, cylinder liner, cylinder head, etc.

Product Description:

Exporting Country: USA, UK, Australia.
Standard: ASTM A48, A536; DIN 1691, 1693; ISO 185, 1083; EN 1561, 1563; DIN 1691, 1693; AS 1830, 1831; JIS, UNI, NF, BS, UNF, NBN, AS, SS, NS.
Material Grade: ISO185 100 150 200 250 300 ASTMA48 NO.20 NO.25 NO.30 NO.35 NO.40 NO.45 DIN1691 GG10 GG15 GG20 GG25 GG30 EN1561 EN-GJL-100 EN-GJL-150 EN-GJL-200 EN-GJL-250 EN-GJL-300 BS1452 100 150 200 250 300 AS1830 T150 T220 T260 T300
Production Process: Sand Casting, Automatic Molding, Machine Molding, Shell Molding, Green Sand Casting, Resin Sand Casting
Surface Treatment: Anodize, Nickel Plating, Galvanize, Powder Coating, Polish etc.
Payment Terms: T/T, L/C
Package: According to customers' requirements
Delivery: 25-30 days



This product is widely used in metallurgy, mining, lifting, transportation, cement, construction, chemical, textile, printing and dyeing, pharmaceutical, and other fields.

Gray Iron Material Grades

Country	Standard	Equivalent Grades of Grey Iron (Gray Cast Iron)						
ISO	ISO 185	100	150	200	250	300	350	-
China	GB 9439	HT100	HT150	HT200	HT250	HT300	HT350	-
USA	ASTM A48	-	NO.20	NO.30	NO.35	NO.40	NO.50	NO.55
			NO.25			NO.45		NO.60
Germany	DIN 1691	GG10	GG15	GG20	GG25	GG30	GG35	GG40
Austria								
European	EN 1561	EN-GJL-100	EN-GJL-150	EN-GJL-200	EN-GJL-250	EN-GJL-300	EN-GJL-350	
Japan	JIS G5501	FC100	FC150	FC200	FC250	FC300	FC350	-

Italy	UNI 5007	G10	G15	G20	G25	G30	G35	-
France	NF A32-101	-	FGL150	FGL200	FGL250	FGL300	FGL350	FGL400
UK	BS 1452	100	150	200	250	300	350	-
India	IS 210	-	FG150	FG200	FG260	FG300	FG350	FG400
Spain	UNF	-	FG15	FG20	FG25	FG30	FG35	-
Belgium	NBN 830-01	FGG10	FGG15	FGG20	FGG25	FGG30	FGG35	FGG40
Australia	AS 1830	-	T150	T220	T260	T300	T350	T400
Sweden	SS 14 01	O110	O115	O120	O125	O130	O135	O140
Norway	NS11 100	SJG100	SJG150	SJG200	SJG250	SJG300	SJG350	-
Min. Tensile Strength (Mpa)		100	150	200	250	300	350	-

Production Line



Control Quality



Packaging Details

1. Unpainted surface are to be coated or package to prevent corrosion or damage.
2. Packaged in to a wooden boxes or other ways for the protection.
3. Suitable for the air or sea.
4. For forging parts: rust resistant, nylon strap, steel strip and wooden pallets or wooden case.

FAQ

Q: do you accept OEM with customer logo?

A: yes, we have about 25 years OEM experience, now we focus on our own brand.

Q: how about your payment terms ?

A: TT, L/C, western union.

Q: how about your packing ?

A: plywood case, if you need more, we can pack all goods with pallet.



Sunrise Foundry CO.,LTD



+86-15067447509



sales@greycastironcasting.com



greycastironcasting.com